

## Bethesda Court, Swansea



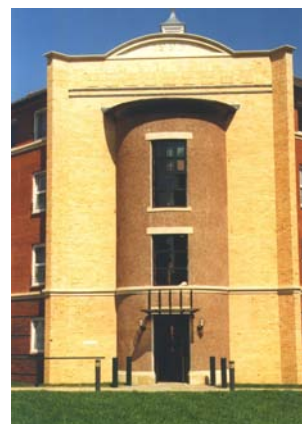
The comprehensive redevelopment of a city block for Swansea Housing Association

The development provided a new 'square' fronting Prince of Wales Road

The project provided 67 flats and a doctors surgery

The work was carried in 3 phases starting in 1993 and completing in 2001

Contract value - approx £2,750,000



### AWARDS

Lord Mayors Design Award - winner residential category - 1996

Lord Mayors Design Award - winner landscaping category - 1996