

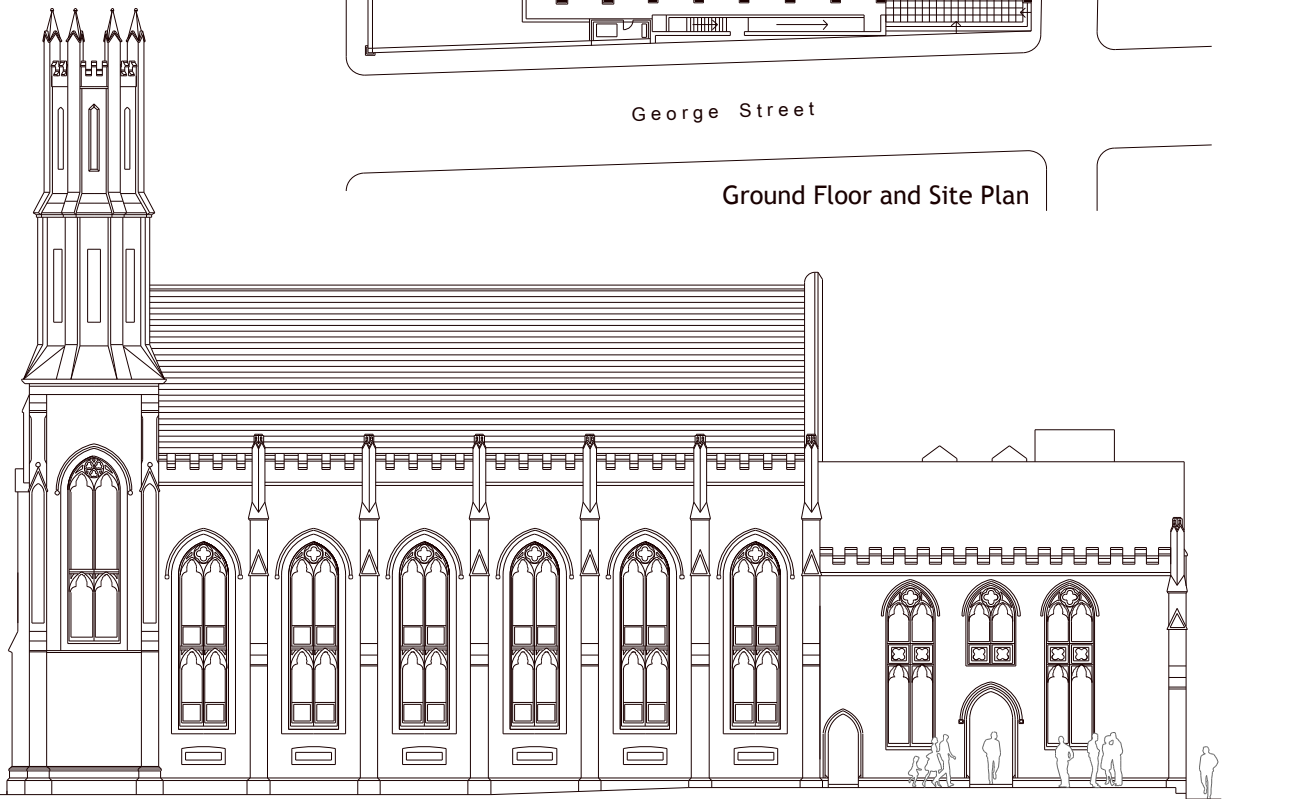
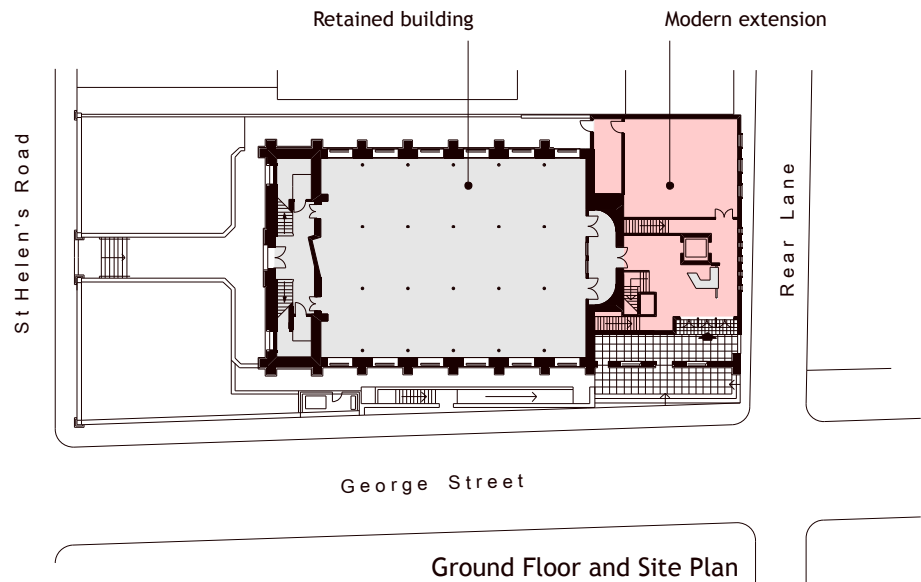
## Swansea Mosque and Islamic Community Centre

The former St Andrew's United Reform Church, a prominent listed building, is being given a new lease of life as the new Swansea Mosque and Islamic Community Centre.

The rear part of the building has been demolished and will be replaced by modern accommodation on 3 floors. The modern extension is screened by the retained East elevation.



Photomontage of View from George Street



Elevation to George Street